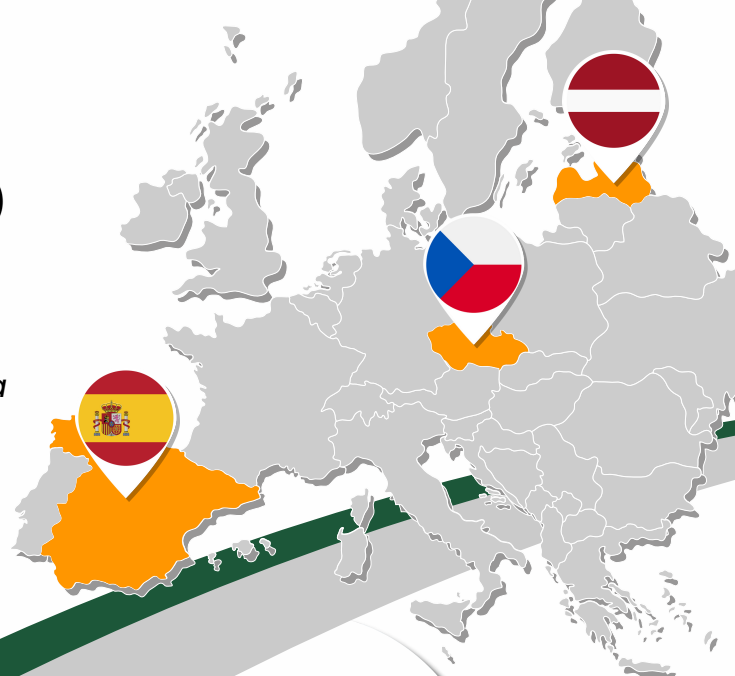




*Connecting Europe and Latin America  
Transforming Today's Data into  
Tomorrow's Solutions*

The COMUNIDAD project aims to develop, test, and implement a framework that will use Copernicus data from agriculture, forestry, and rural development in Chile and Colombia.



**Shape a stakeholder community** that will actively use the Copernicus data and services.

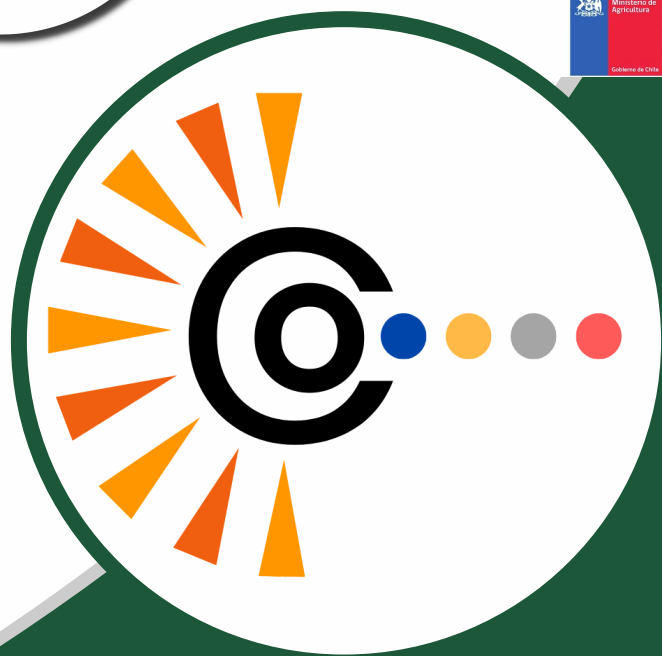
**Organize the COMUNIDAD Platform** to facilitate access to Copernicus data and information for partners in Chile and Colombia.

**Develop algorithms, services, and products** to meet local user needs and improve Copernicus global product quality. Establish combined use of EGNSS and Copernicus-related platforms in Chile and Colombia, with potential for transfer to all CELAC countries.

**Establish a management framework** for using Copernicus data in agriculture and forestry, focusing on development, testing, and evaluation of customized and new downstream services. Support forestry in Chile and rural development in Colombia.



comunidad-project.eu



Funded by the European Union under grant agreement No. 101131859. Views and opinions expressed are however those of the author(s) only and do not necessarily reflect those of the European Union or EUSPA. Neither the European Union nor the granting authority can be held responsible for them.



## Project Management

Work Package 1 will coordinate the project activities, ensure quality and timely project execution and deliverables, and carry out the scientific, financial, and administrative management of the project.

### COMUNIDAD WP1

## System architecture design and development

Work Package 2 will Collect and define requirements from pilots for services and applications. Design the main architecture components of the platform, define integration of existing components and services. And will design the COMUNIDAD platform infrastructure.



### COMUNIDAD WP2



## Training and workshops in Chile and Colombia

Work Package 3 will define the training materials content with a definition of the target audience. Develop training materials and scenarios for workshops. And will organise training events, workshops, and hackathons for defined target participants.

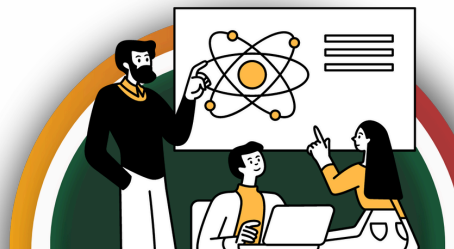
### COMUNIDAD WP3

## Applications and services for forestry/agriculture

Work package 4 will develop COPERNICUS downstream services and APPS for pilot users, supporting smart decision tools via the COMUNIDAD Platform. Tools will be tested with partners and stakeholders in Chile and Colombia. Goals include producing high-resolution downstream services, developing farm activity planning (Colombia) and forest management services (Chile), creating agro-climatic indicators for climate risk and policy, and assessing conventional and smart farming and forestry impacts. Data products will be validated for completeness, precision, and accuracy against the spatiotemporal targets of the climate services and smart decision tools.



### COMUNIDAD WP4



## COMUNIDAD Platform

Work package 5 will carry out the initial development of the COMUNIDAD platform (a complex platform providing services and methods utilising Copernicus and GEOSS data and services for final users in Chile and Colombia) based on requirements collected in WP2 and the utilisation of components defined by WP2. This WP will also conduct the internal testing of the COMUNIDAD platform and preparation of the initial release for workshops and hackathons. Here is the final development of the COMUNIDAD platform based on pilot testing, and workshop feedback will also be conducted.

### COMUNIDAD WP5

## Dissemination and exploitation

Work package 6 will enhance awareness among various groups through engagement and knowledge sharing. Guarantee interoperability with the Climate-ADAPT platform in EU, Copernicus data from the related thematic area, other related projects, and the CELAC programmes and projects and other initiatives, ensuring clustering and coordination with other related EU/National/International projects and CELAC initiatives. And will introduce exploitation strategy focusing on stakeholders, scientific community and decision-makers engagement.



### COMUNIDAD WP6